



DiamondTM

— A CUT ABOVE —



INTERTEK
INDUSTRIAL CORP.

DRAWER SLIDES

**THE COMPLETE DRAWER SLIDE LINE FOR COMMERCIAL,
RESIDENTIAL AND PROFESSIONAL MARKETS**

- Full Extension Ball-Bearing Slides
- Soft Close Ball-Bearing Slides
- Concealed Undermount Soft-Close Slides
- Bottom Mounted Self-Closing Epoxy Slides

Meets or Exceeds Multiple Industry Standards



YDX-04227 SERIES Full Extension Slides



Reliable, Consistent and the Best Value in its Class

IIC PART NUMBER	SIZE	DESCRIPTION
YDX-04227-12-Z	12" (300mm)	Full Extension
YDX-04227-14-Z	14" (350mm)	Full Extension
YDX-04227-16-Z	16" (400mm)	Full Extension
YDX-04227-18-Z	18" (450mm)	Full Extension
YDX-04227-20-Z	20" (500mm)	Full Extension
YDX-04227-22-Z	22" (550mm)	Full Extension
YDX-04227-24-Z	24" (600mm)	Full Extension
YDX-04227-26-Z	26" (650mm)	Full Extension
YDX-04227-28-Z	28" (700mm)	Full Extension

FEATURES:

- 100# Load Rating
- 15 Pair / Carton
- Bright Zinc Finish
- Height: 1 - 13/16" (12.7mm)
- Clearance: 1/2" (+1/32, -0)
- 32mm Hole Pattern
- Lever Disconnect
- Individual Polybagged

YFX-SB602-BRACKET
Rear Metal Bracket

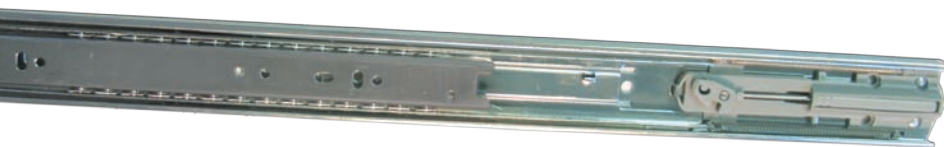


YDX-04268 SERIES

"Soft-Close" Full Extension Slides



The same heavy duty construction as the original full extension slide, but with the added convenience of soft-close.



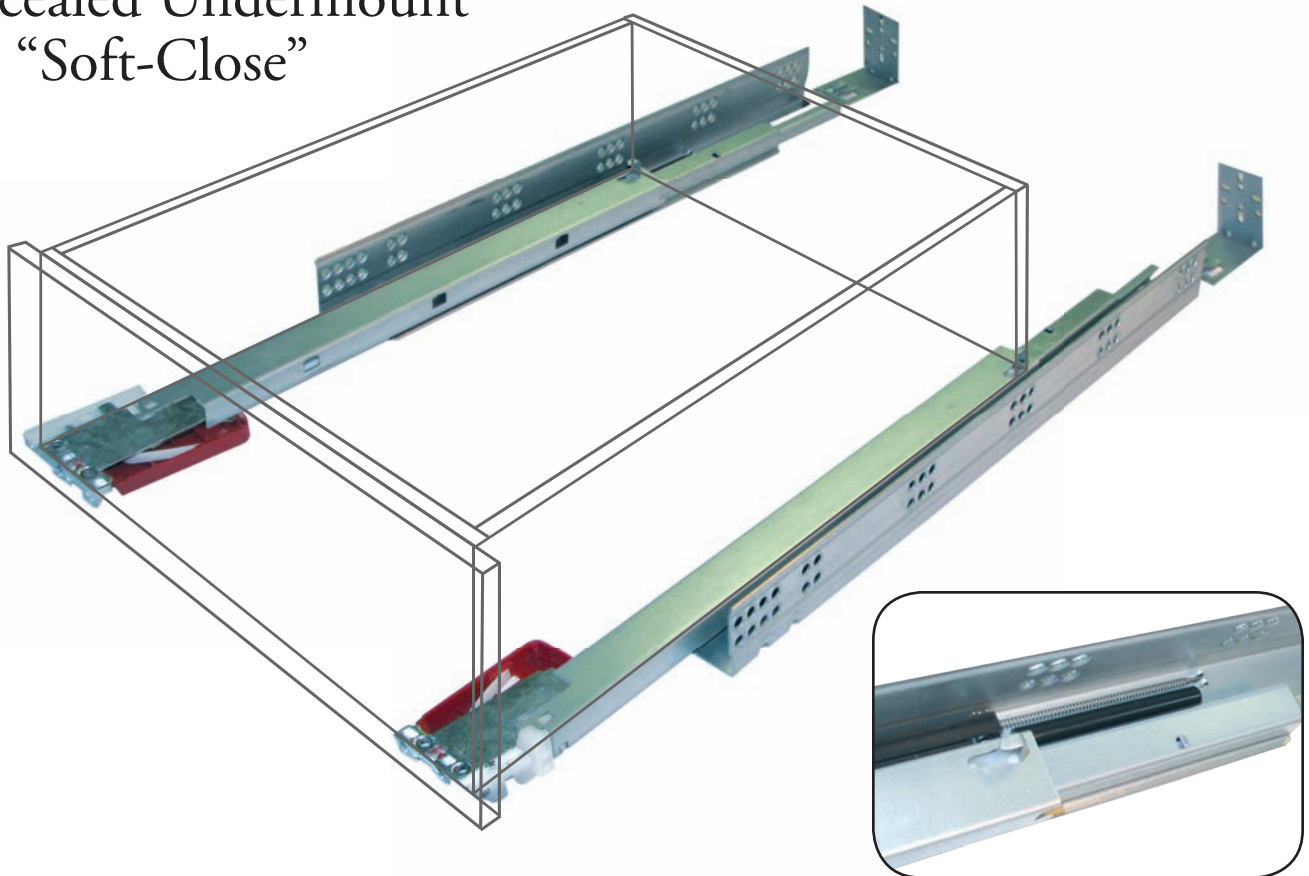
FEATURES:

- 100# Load Rating
- 15 Pair / Carton
- Bright Zinc Finish
- Height: 1 - 13/16" (12.7mm)
- Clearance: 1/2" (+1/32, -0)
- 32mm Hole Pattern
- Lever Disconnect
- Individual Polybagged
- Soft-Close Mechanism

IIC PART NUMBER	SIZE	DESCRIPTION
YDX-04268-16-Z	16" (400mm)	Full Extension - Soft Close
YDX-04268-18-Z	18" (450mm)	Full Extension - Soft Close
YDX-04268-20-Z	20" (500mm)	Full Extension - Soft Close
YDX-04268-22-Z	22" (550mm)	Full Extension - Soft Close



YDX-04183 SERIES
Concealed Undermount
with “Soft-Close”



PREMIUM “SOFT-CLOSE” DRAWER SYSTEM FOR RESIDENTIAL CABINETRY

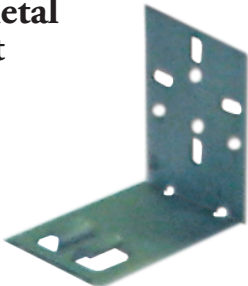
IIC PART NUMBER	SIZE	DESCRIPTION
YDX-04183-12	12"	Full Extension – Soft-Close – Concealed Undermount
YDX-04183-15	15"	Full Extension – Soft-Close – Concealed Undermount
YDX-04183-18	18"	Full Extension – Soft-Close – Concealed Undermount
YDX-04183-21	21"	Full Extension – Soft-Close – Concealed Undermount

FEATURES:

- Frame or Frameless Construction
- 75# Load Rating
- 10 Pair / Carton
- Galvanized Finish
- Includes Front Release Levers for Easy Drawer Removal
- Meets or Exceeds Multiple Industry Standards Including ANSI/BIFMA

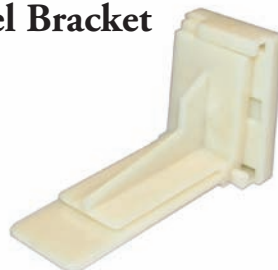
YDX-04183-BRACKET

Rear Metal Bracket



YDX-04183-AP BRACKET

Adjustable Plastic Dowel Bracket





YDX-02102 SERIES Bottom Mounted “Self-Closing” Epoxy Slides

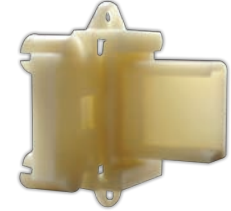


*An Economical Choice for
Residential Drawer Systems*

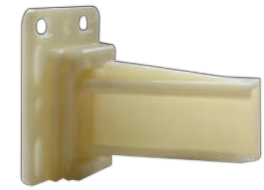
IIC PART NUMBER	SIZE	DESCRIPTION
YDX-02102-10-W	10" (250mm)	Bottom Mounted Self-Close
YDX-02102-12-W	12" (300mm)	Bottom Mounted Self-Close
YDX-02102-14-W	14" (350mm)	Bottom Mounted Self-Close
YDX-02102-16-W	16" (400mm)	Bottom Mounted Self-Close
YDX-02102-18-W	18" (450mm)	Bottom Mounted Self-Close
YDX-02102-20-W	20" (500mm)	Bottom Mounted Self-Close
YDX-02102-22-W	22" (550mm)	Bottom Mounted Self-Close
YDX-02102-24-W	24" (600mm)	Bottom Mounted Self-Close

- FEATURES:**
- 75# Load Rating
 - 25 Pair / Carton
 - Bright White Finish
 - Individually Packaged

YDX-8000-APB-DOW
**Adjustable Back
Socket w/Dowels**



YDX-8001-APB
**Adjustable
Back Socket**



DISTRIBUTED BY:

3023 Powers Avenue • Jacksonville, FL 32207
800-848-1043
Tel: (904)739-3344 • Fax: (904)739-3347
email: intertek@bellsouth.net • web: www.intertekindustrial.com